



STANDARD QUALITY

GLOBAL CONNECTION





2015 3PO BASIC

MAY 2015, GER

PART 3



CENTER – OPEN ANGLE & 45°



FIBA

We Are Basketball



CENTER – OPEN ANGLE & 45°



FIBA

We Are Basketball

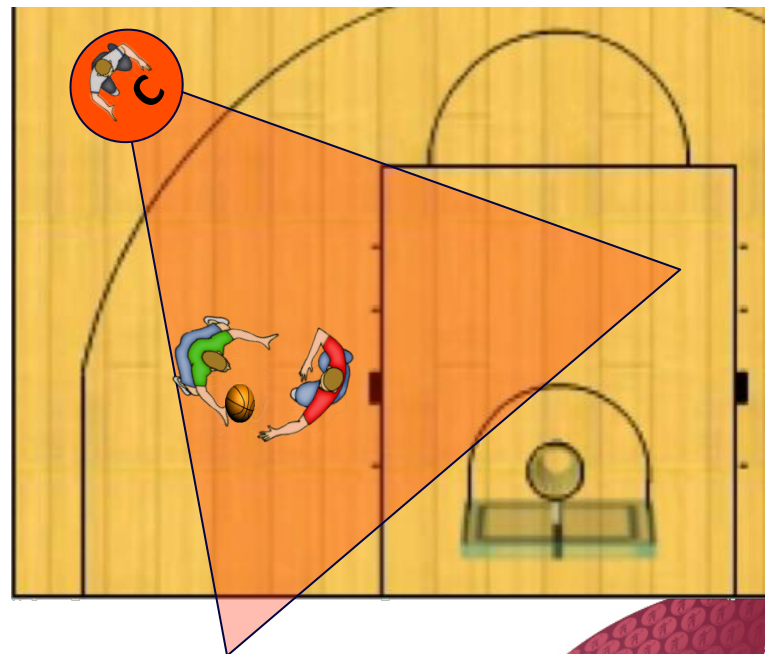
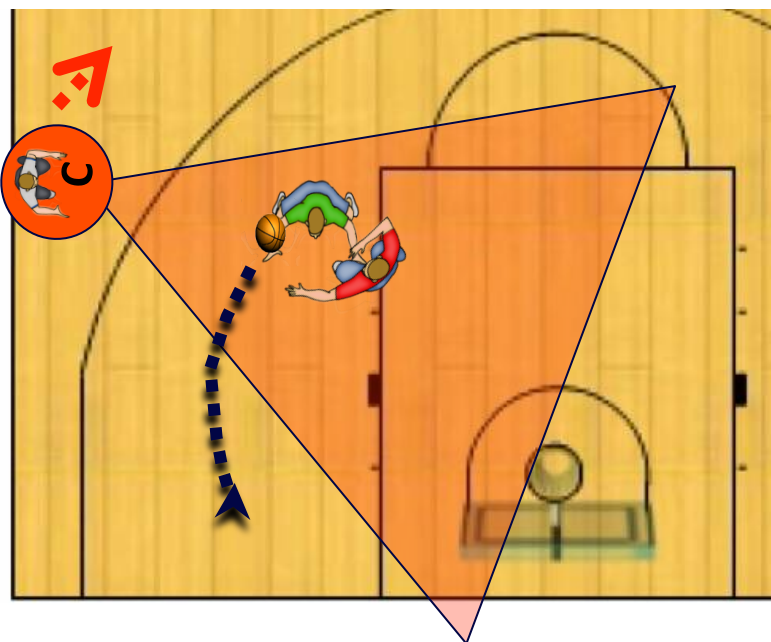


CENTER – CROSS STEP, OPEN ANGLE & 45°

Cross Step

- Find initial position where you are able to see the defensive player when refereeing on ball
- Find the initial position where you are able to cover the ball and see possible next play in progress

- Players start to move towards the basket
- Center should step in opposite direction (Cross Step) of the players in order to maintain the open look (angle) on the play.

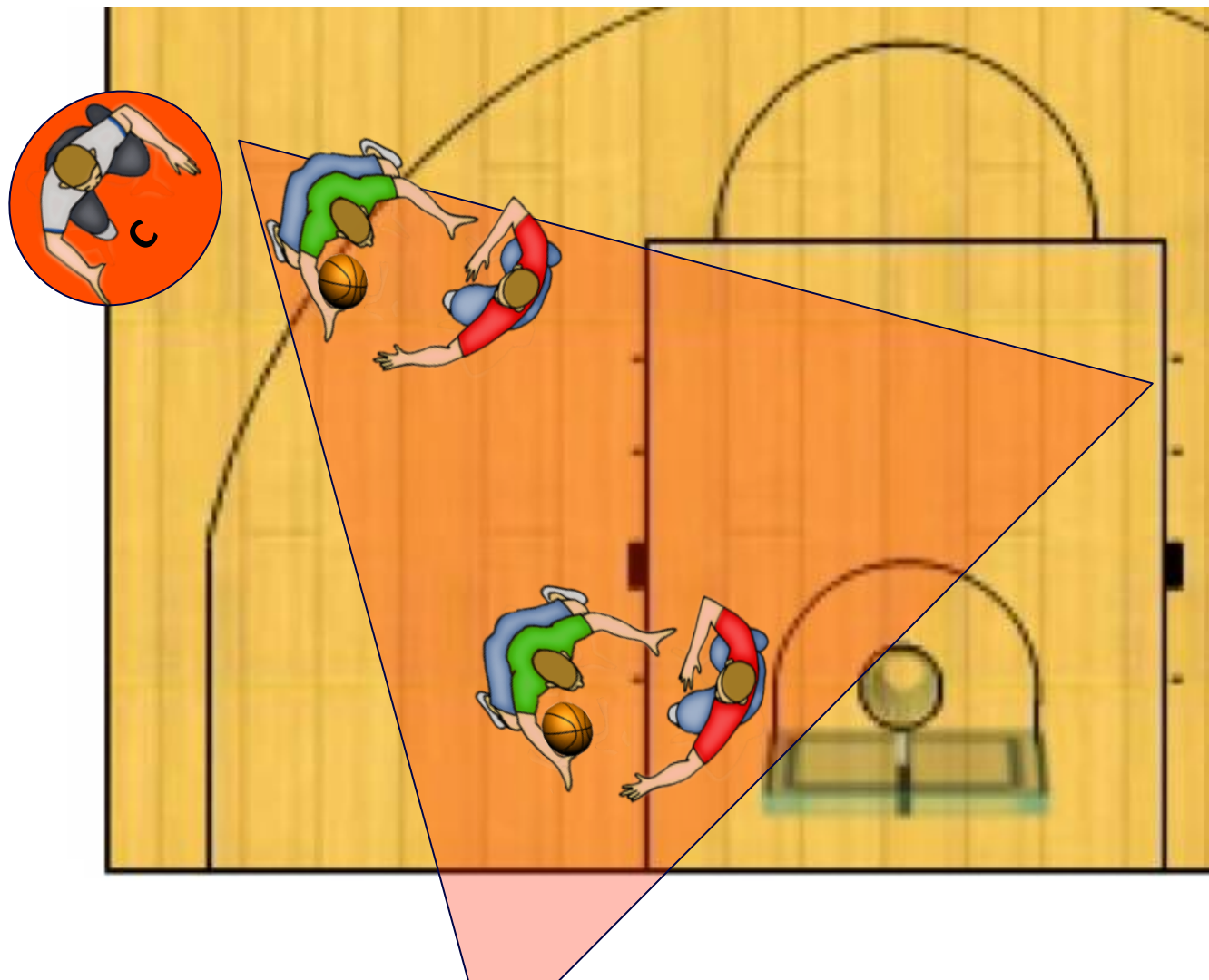


CENTER – CROSS STEP, OPEN ANGLE 8 45°



FIBA

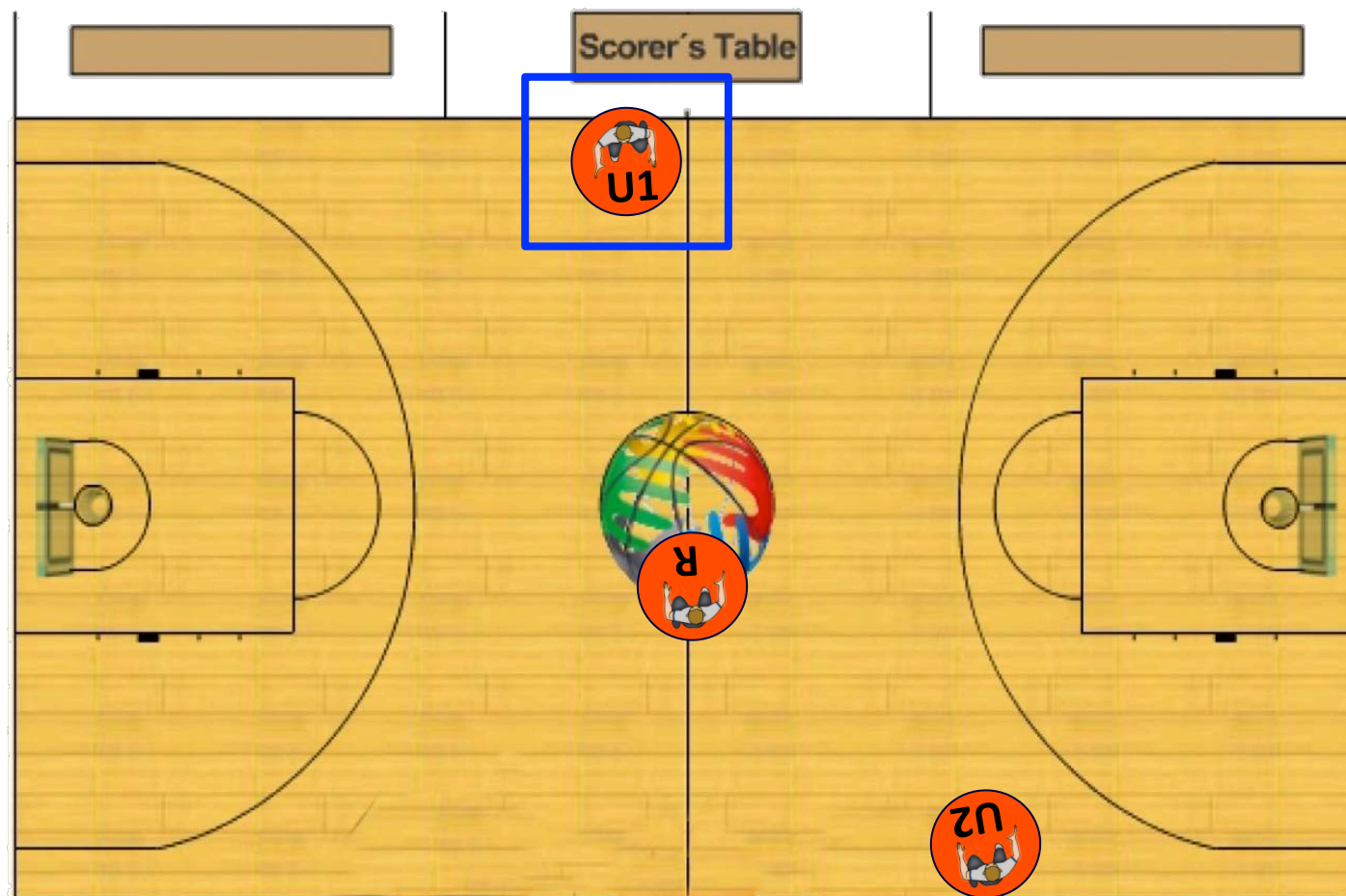
We Are Basketball



JUMPBALL / U1 POSITION

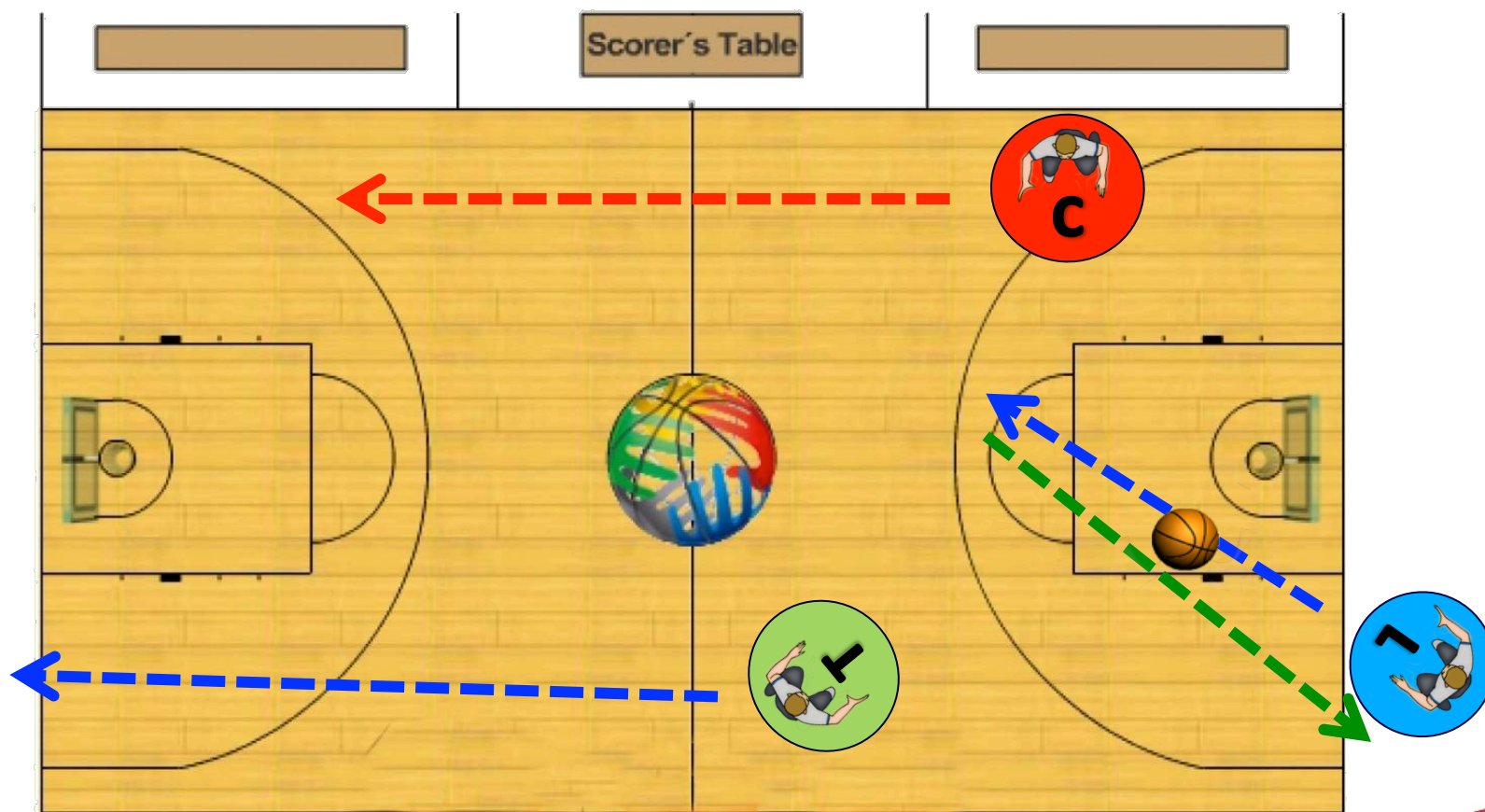


FIBA
We Are Basketball



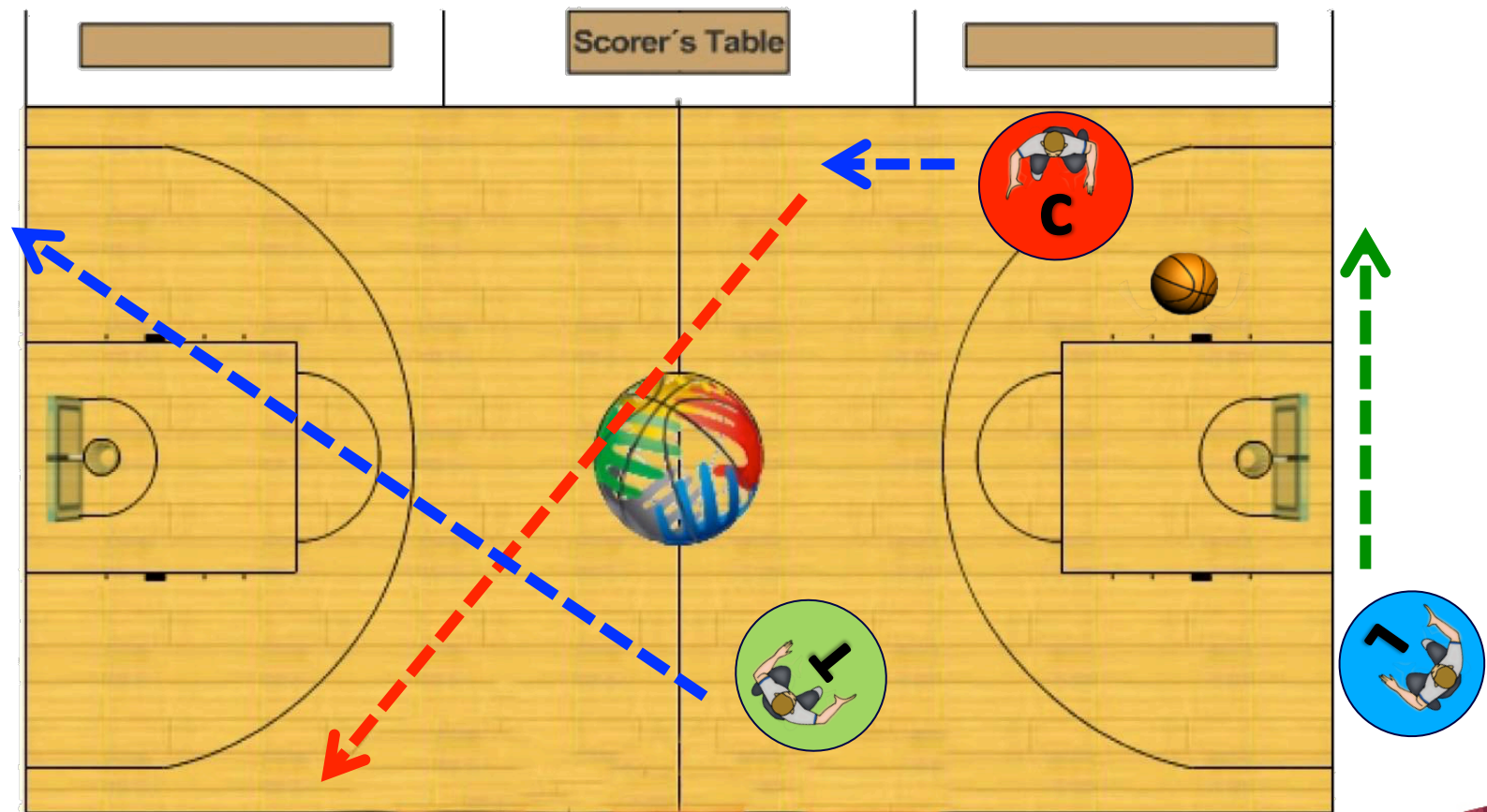
FOULS / SWITCH - FOUL ON THE BACKCOURT

FOUL ON THE OPPOSITE SIDE BY LEAD

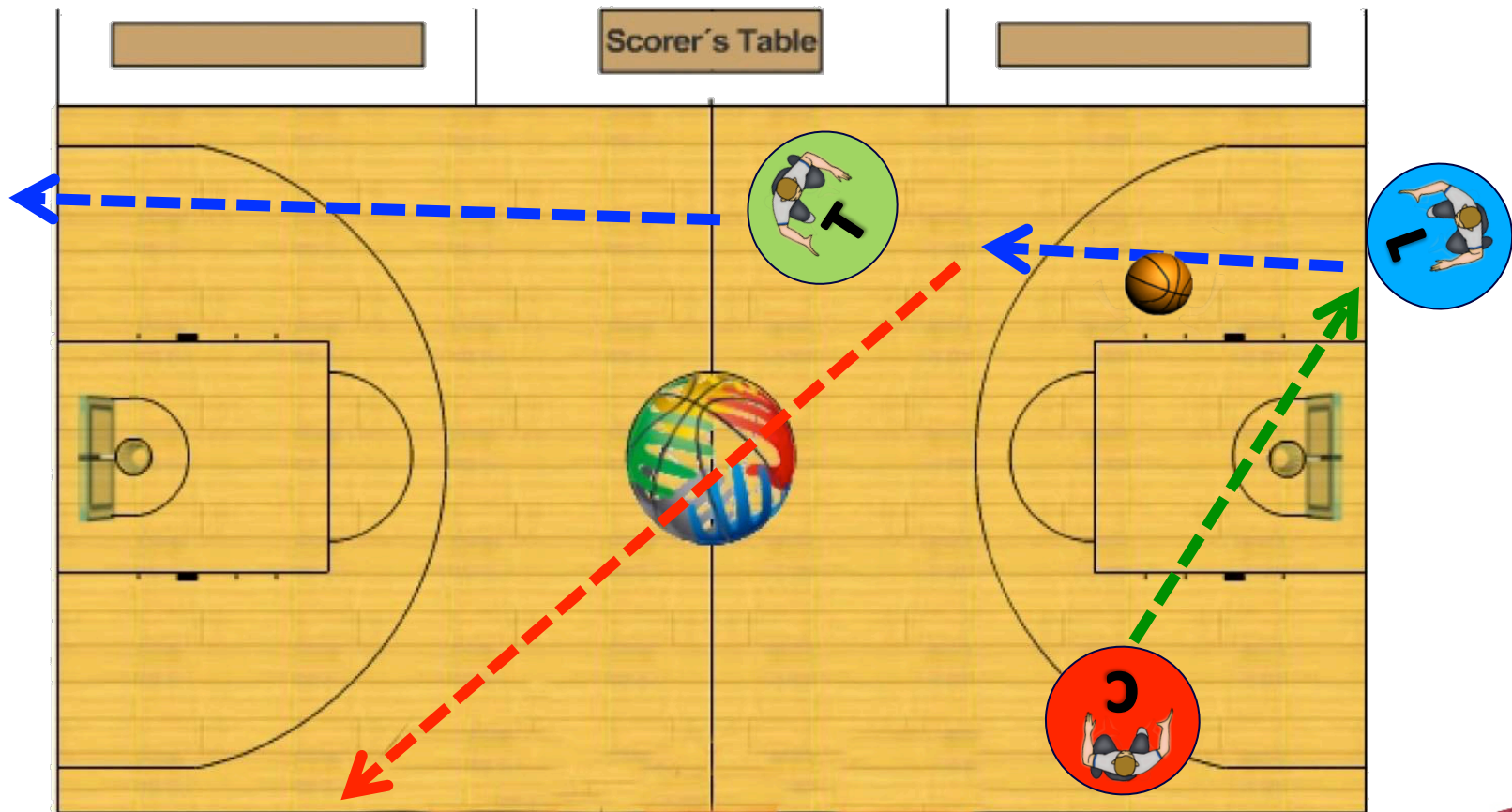


FOULS / SWITCH - FOUL ON THE BACKCOURT

FOUL ON THE TABLE SIDE BY CENTER



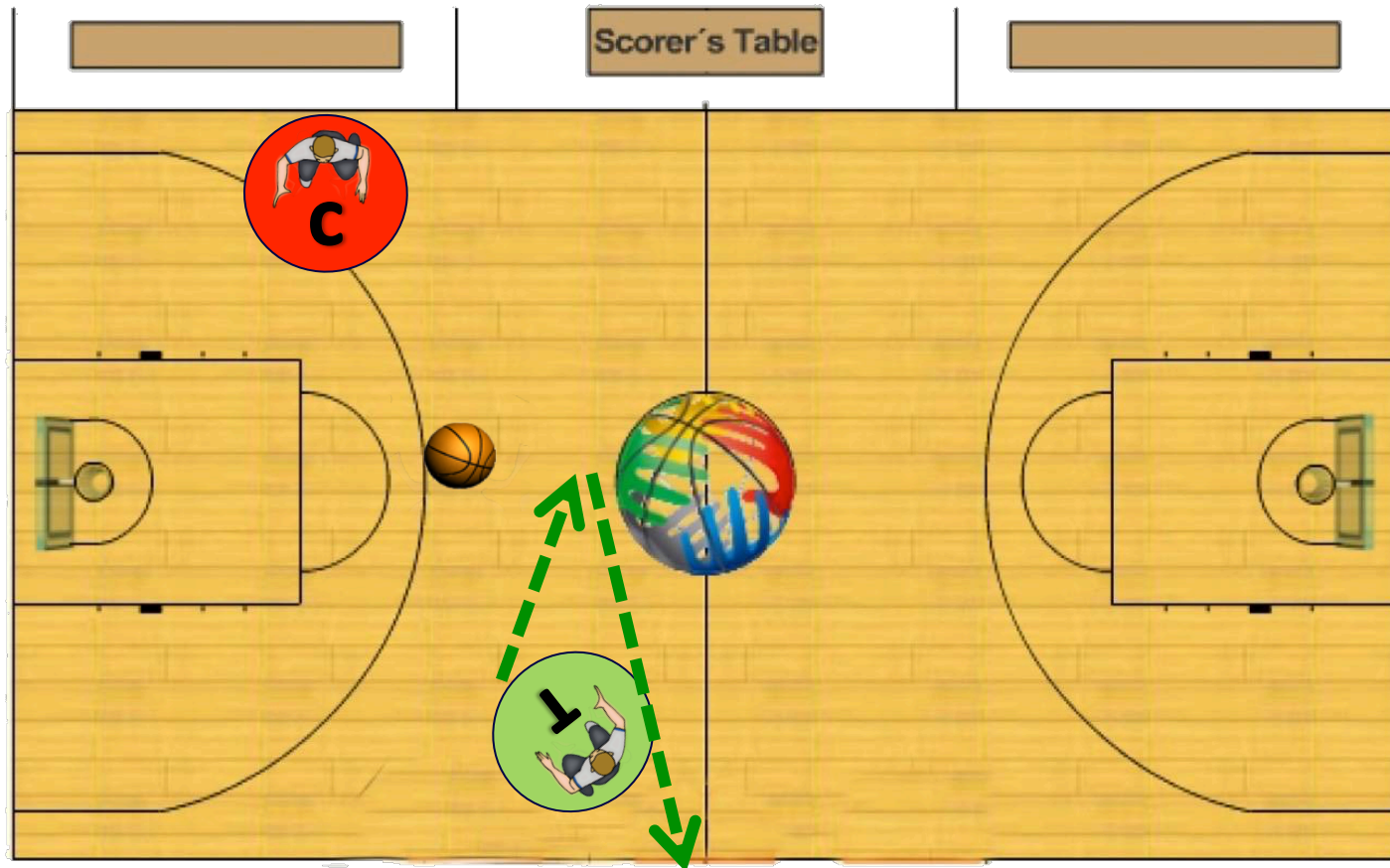
FOUL ON THE TABLE SIDE BY LEAD



A diagram of a basketball court from a top-down perspective. The court is yellow with black lines. At the top, there is a brown rectangular area labeled "Scorer's Table". In the center of the court is a basketball. Three players are shown in circular icons: a green circle with a player in a white jersey with the number 1, a red circle with a player in a white jersey with the number 3, and a blue circle with a player in a white jersey with the number 2. A red dashed arrow points from the center towards the left side of the court. A blue dashed arrow points from the center towards the bottom left. A green dashed arrow points from the right side of the court towards the bottom right. A basketball is shown on the right side of the court.

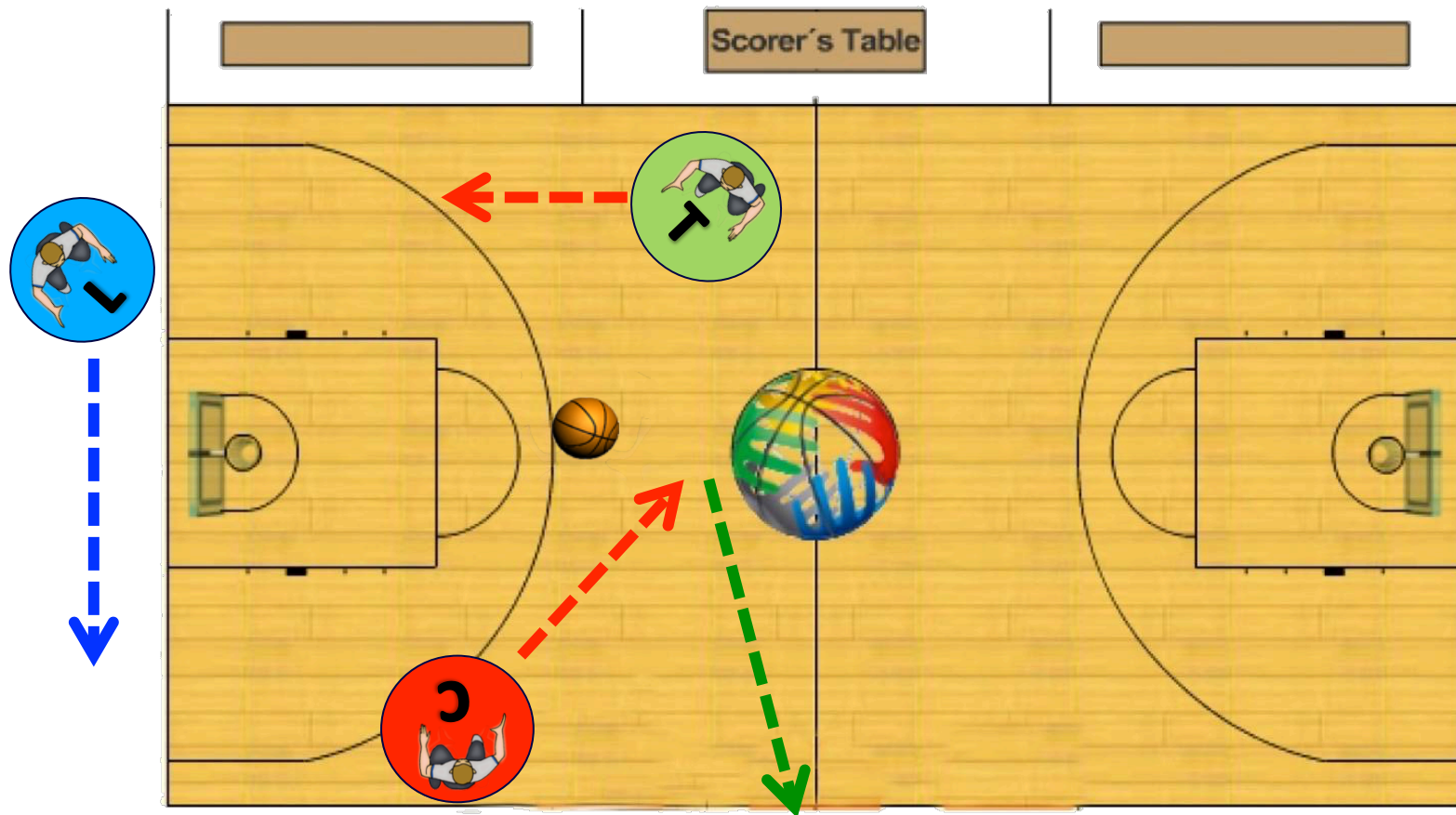
FOULS / SWITCH - FOUL ON THE FRONTCOURT

DOUBLE WHISTLE BY CENTER & TRAIL



FOULS / SWITCH - FOUL ON THE FRONTCOURT

DOUBLE WHISTLE BY TRAIL & CENTER



FREE THROWS – PASSIVE OFFICIAL

2P0 3P0

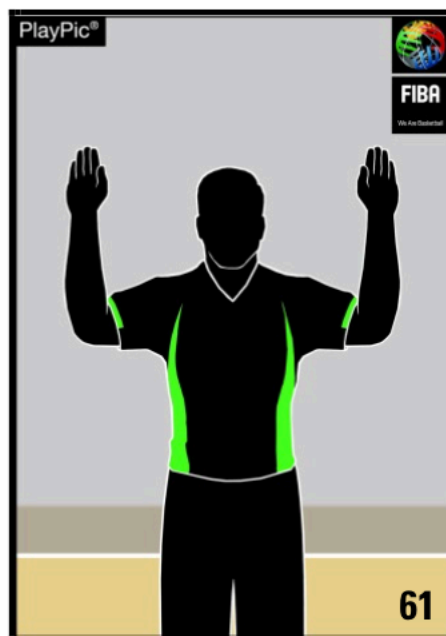
Adminstrating Free Throws – Passive Official (Trail & Centre)

1 FREE THROW



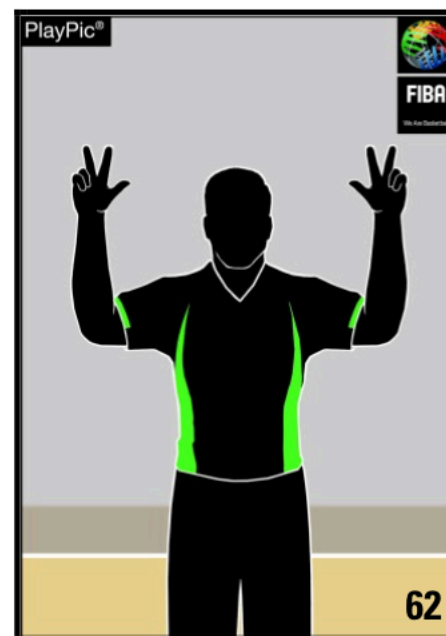
Index finger

2 FREE THROWS



Fingers together
on both hands

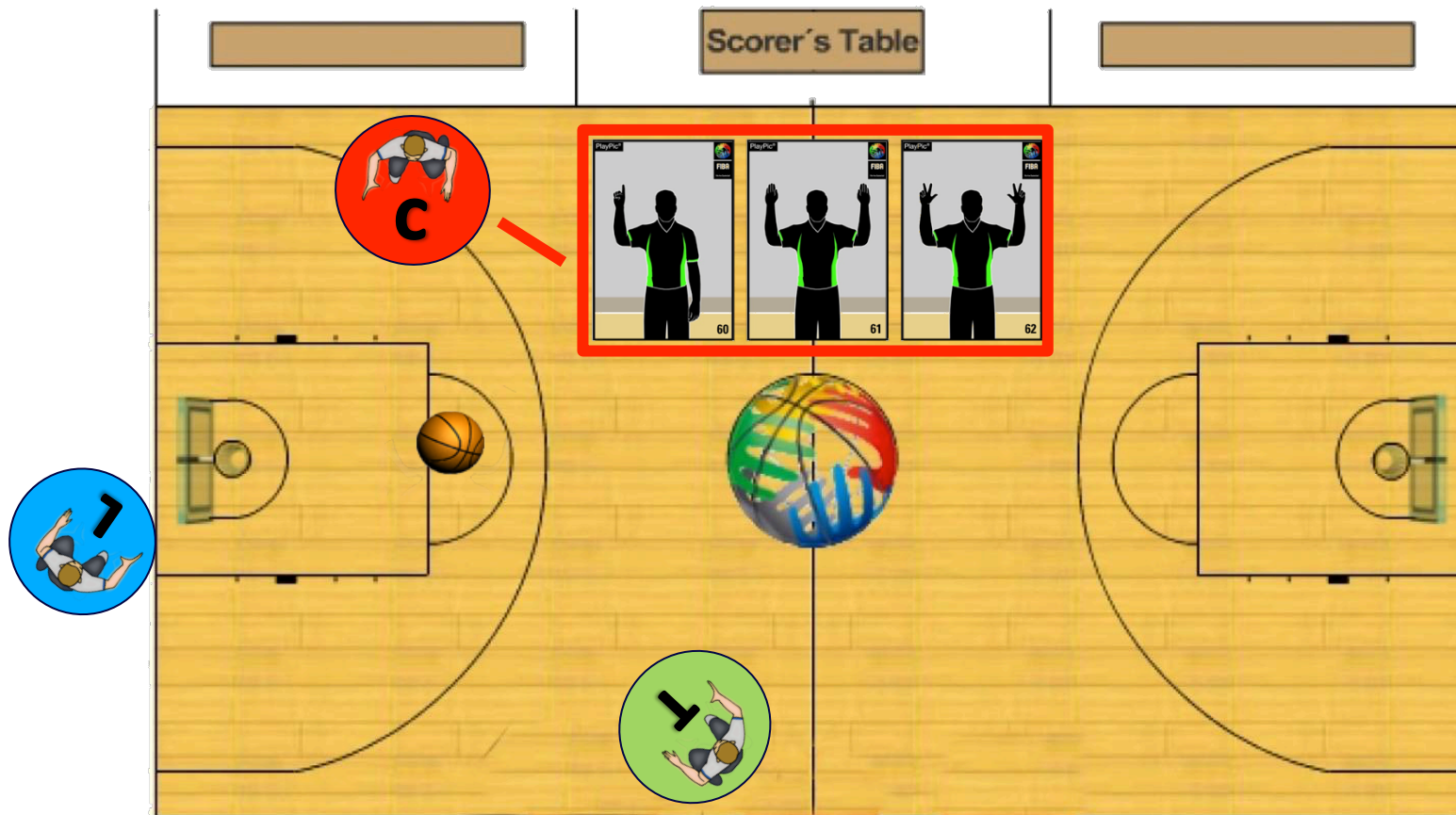
3 FREE THROWS



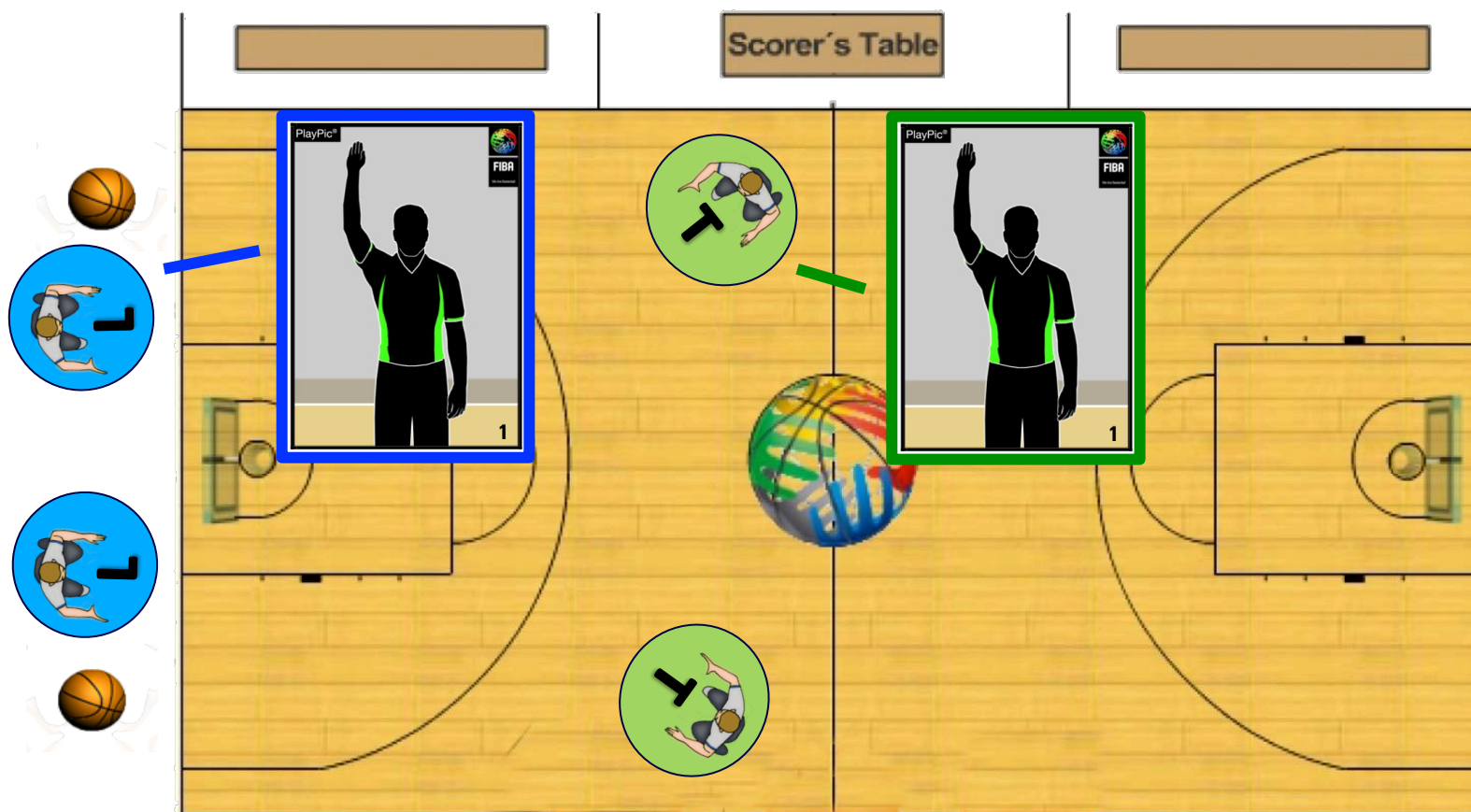
3 fingers extended
on both hands

3PO: FREE THROWS – PASSIVE OFFICIAL

SIGNALS – CENTER ONLY INDICATES NUMBER OF FREETHROWS



TRAIL MIRRORS THE TIME-IN SIGNAL FROM LEAD

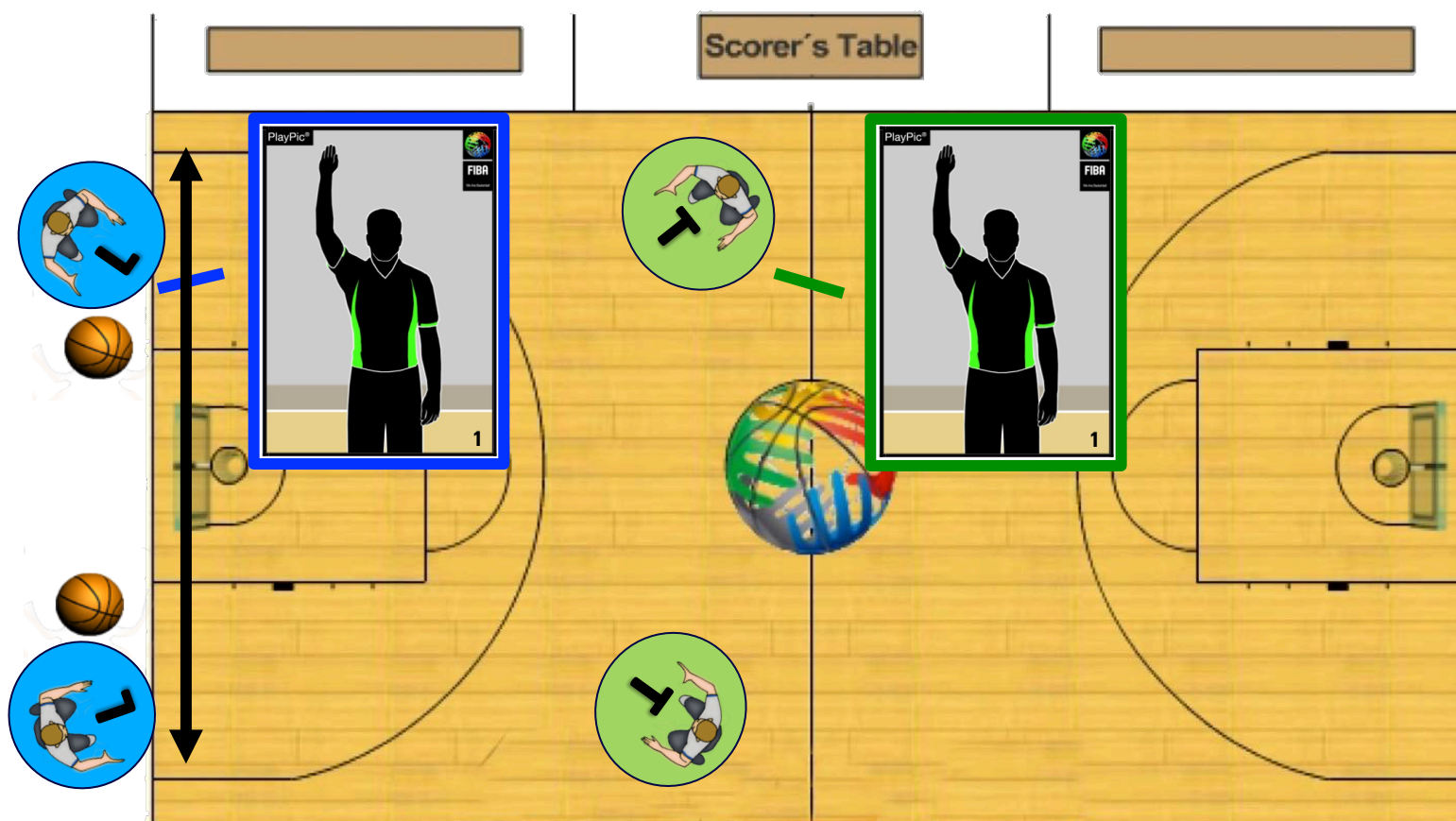


2015-16: THROW-IN FRONT COURT ENDLINE



**NEW FOR
SEASON
2015-16**

- A) Lead (active referee) outside (basket-ball-referee)
- b) Trail mirrors the time-in signal from lead

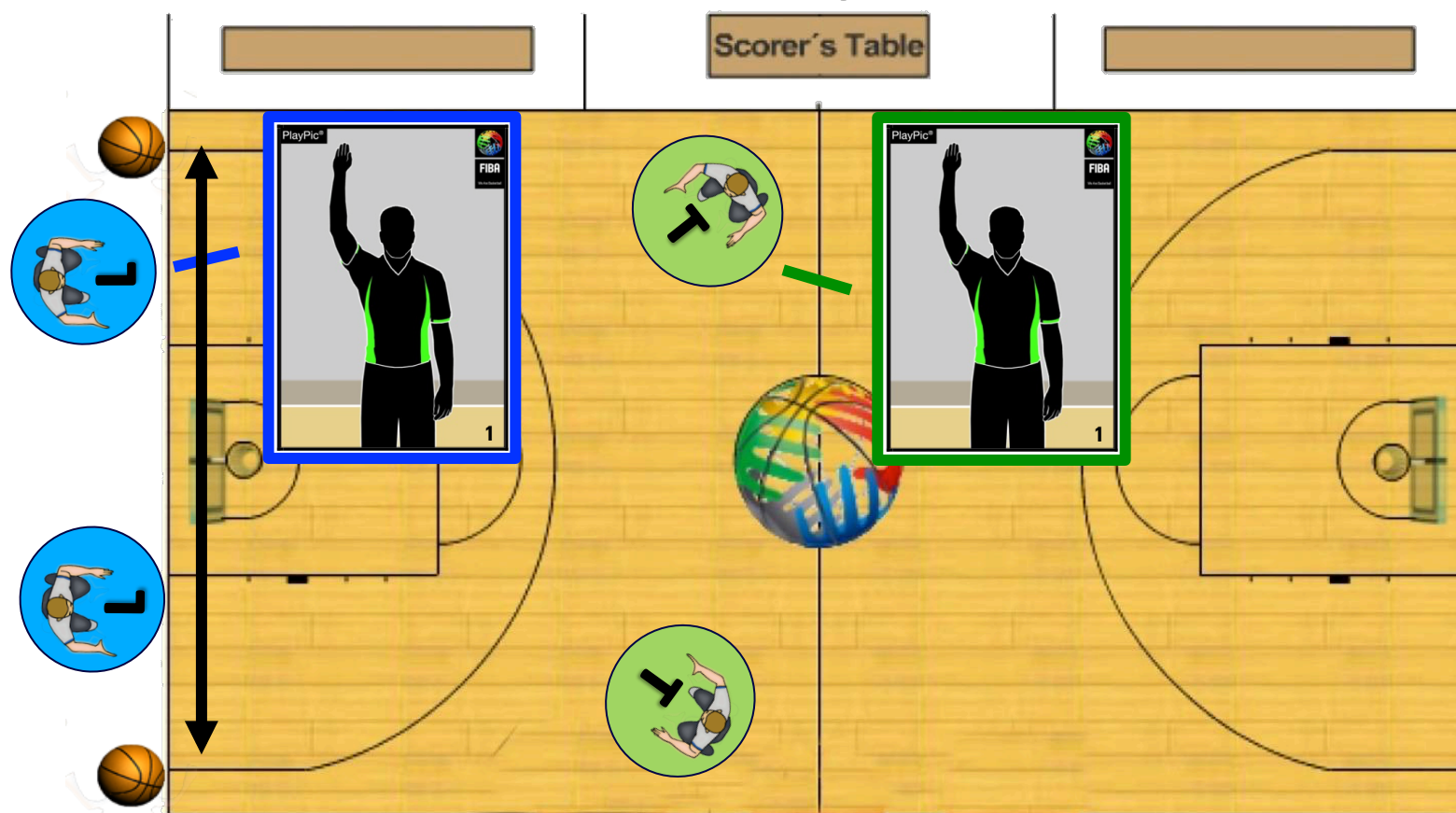


2015-16: THROW-IN FRONT COURT ENDLINE



**NEW FOR
SEASON
2015-16**

- A) When throw-in in the corner
- B) Lead (active referee) inside (basket-referee-ball)
- C) Trail mirrors the time-in signal from lead







STANDARD QUALITY

GLOBAL CONNECTION

