



STANDARD QUALITY

GLOBAL CONNECTION





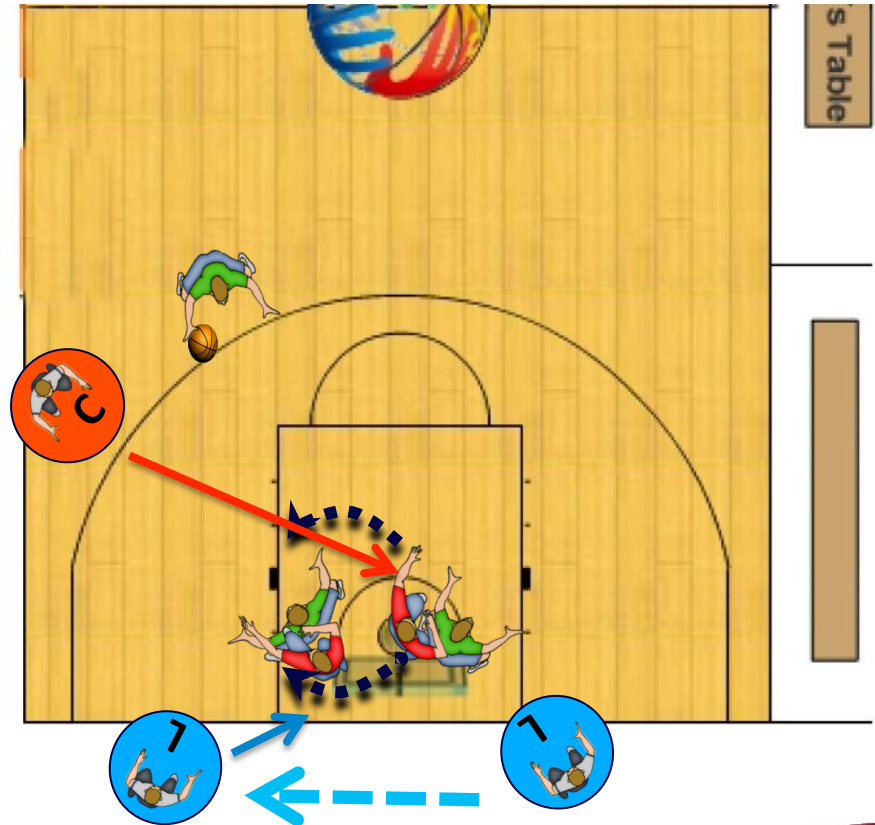
2015 3PO ADVANCED

MAY 2015, GER



Partner's Position & Coverage

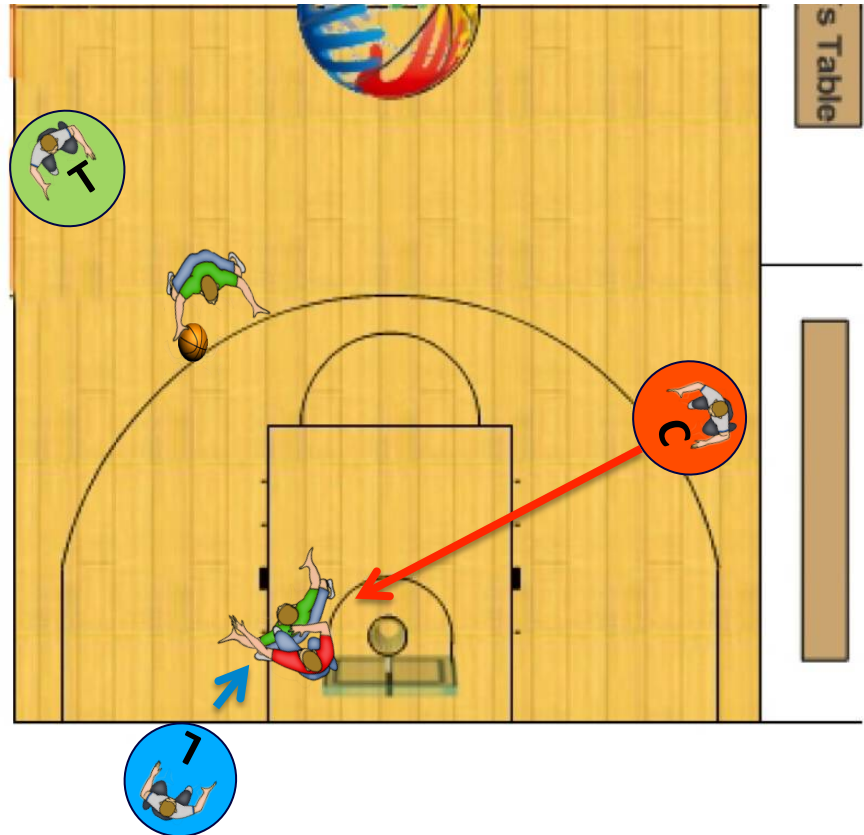
- It is important understand that your coverage depends on two factors
 - a) play situation
 - b) your partners position
- This means that even for identical play you might have different coverage due to different location of your partner – referee where your partners cannot.
- Eg. Low post curl on baseline away from L. Offensive player could hook (first action) and L has no chance to see it. C has open look to ref curl play and hook by offensive player.



[illegible]

Partner's Position & Coverage

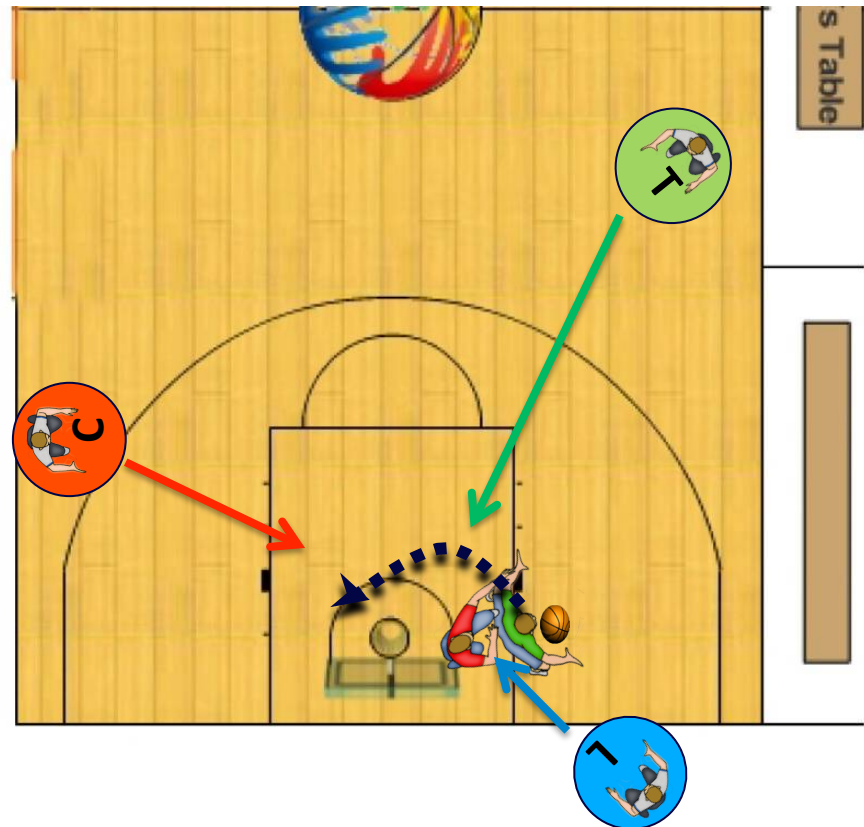
- ✓ Eg. If offensive player in the post hooks with right arm L has no chance to see it.
- ✓ C has open look for this play to pick up the hook by offensive player with right arm.



Partner's Position & Coverage

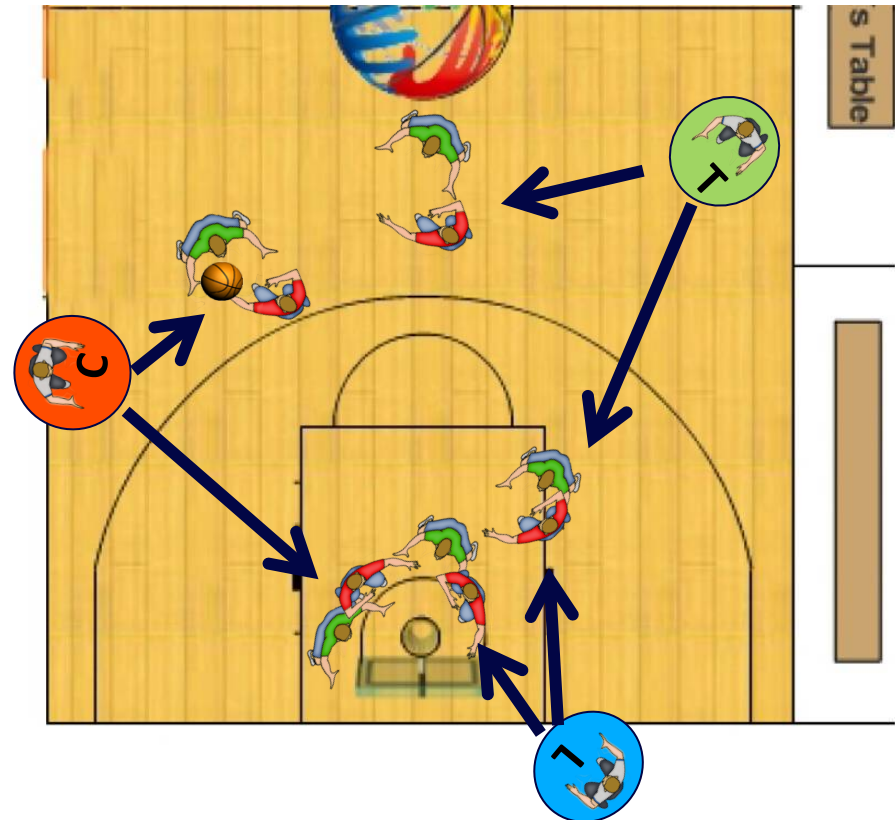
- Eg. In the same play primary coverage might change due to the position of players and referees.
- 1) L: beginning of the play,
 - 2) T/L: middle of the play,
 - 3) C: has the end of the play.

1-2-3 Play



3PO ADVANCED / REBOUNDS

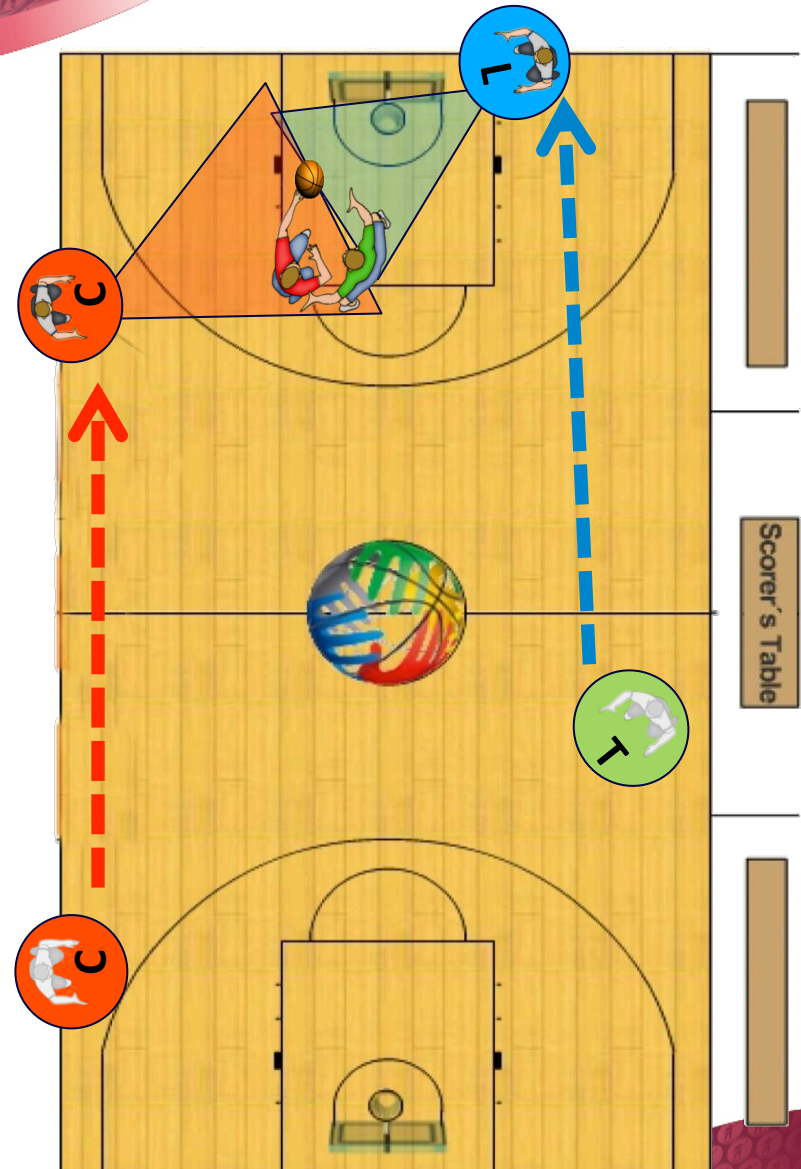
- In rebound situation we might have maximum of 5 matchups (in theory)
- If each referee picks up only one match-up, we have around 75% coverage (three out of four).
- Challenge is that every referee picks-up
 - a different match-up
 - the most appropriate ones.
- “Priority of my side?”
- There is normally one match-up you can easily rule out (players not actively engaged).





Fast break coverage

- In the fast break, **L** has to be able to be ahead of the ball and looking at the play
- **L** stops at the baseline in position where is able to see the front of the rim (possible goal tending if **C** is not engaged with the play), focus on defensive player coming from behind
- It is important to have dual coverage by **L** and **C** (from their respective sides)
- **C** needs to catch up with the speed of the fast break and ready to referee from his side.
- Sprint to position, be stationary, observe play, make a decision







No worries!

*Next generation will
be always better than
previous one!*



STANDARD QUALITY

GLOBAL CONNECTION

